



Shop Online

- [Bell Pads](#)
- [Blades](#)
- [Body Cords](#)
- [Books](#)
- [Chest Protection](#)
- [Coaching Equipment](#)
- [Equipment Bags](#)
- [Favero Equipment](#)
- [Fencing Jackets](#)
- [Gloves](#)
- [Grips](#)
- [Guards](#)
- [Knickers](#)
- [Lames](#)
- [Masks](#)
- [Miscellaneous](#)
- [Name Placement](#)
- [Points & Wires](#)
- [Pommels](#)
- [Scoring Equipment](#)
- [Shoes/Socks](#)
- [Starter Sets](#)
- [Testing Devices](#)
- [Under Arm Protectors](#)
- [Weapons](#)
- [Weapon Tools](#)
- [How To Measure Videos](#)
- [Featured Items](#)
- [Sale Items](#)
- [View Your Cart](#)

Our Site

- [Home](#)
- [Catalog](#)
- [How to Order](#)
- [About TCA](#)
- [Our Seamstresses](#)
- [About Our Masks](#)
- [How To Measure](#)
- [Site Map](#)
- [Privacy Notice](#)
- [Other Links](#)
- [Search Site](#)
- [Contact Us](#)

Sport Fencing Supplies & Equipment Supplier

How To Measure

How to Measure for:

- [Lames and Jackets](#)
- [Knickers](#)
- [Unitards](#)
- [Plastrons and Underarm Protectors](#)
- [Gloves](#)
- [Masks](#)

LAMES and JACKETS

All of Triplette's jackets are made using the sizing guides below. The cotton jackets are cut fuller than our stretch jackets to allow maximum mobility. We carry inventory in the size scales listed, however our seamstresses can fit you regardless of your size or shape. Please call if you do need special fitting as they may need measurements other than the ones on the chart. Custom orders are an additional \$20.00 over the usual price and may take as much as 7 days to complete.

Jacket Measurements

When measuring, make certain to get accurate measurements with a good tape measure.

MEN- We need four measurements please. Include these figures in the comments section of your order. Your chest should be measured as high as possible on the chest with the arms down. Your waist should be measured at the navel, not at the pants line. Record your height and weight and put your feet up and relax.

WOMEN- We need five measurements please. include these figures in the comments section of your order. Measure your chest at the largest place, your waist at the smallest place, and your hips at the largest. Please record your height and weight also.

Men's Jackets	Inches	Inches	Inches	Inches	Inches	Inches	Inches
Chest measurement	35-36	37-38	39-40	41-42	43-44	45-46	47-48
Height	68-70	68-70	70-72	70-72	71-73	71-73	71-73
Recommended Size	36	38	40	42	44	46	48

Women's Jackets	Inches	Inches	Inches	Inches	Inches	Inches	Inches
Chest measurement	31-32	33-34	35-36	37-38	39-40	41-42	43-44
Height	63-66	63-66	63-66	63-66	63-66	63-66	63-66
Hips	33-34	35-36	37-38	39-40	41-42	43-44	45-46
Recommended Size	32	34	36	38	40	42	44

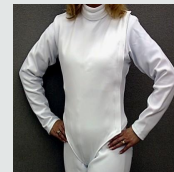
KNICKERS

When measuring for your knickers, make certain to get an accurate (use a tape measure, not a string and a ruler) measurement of your waist. **MEN-** measure your waist at your navel, not your pants line. **WOMEN-** measure your waist at the smallest place, and your hips at the largest place. Since our sizes are in two inch

Features



420 TCA Stretch Knickers
\$54.00



TCA Stretch Front Close Nylon Fencing Jacket
\$65.00



Economy Electric Foil 35"
\$40.50



Economy Practice Saber 35"
\$38.50

Search

Go

increments and your waist may not be on our sizing guide, choose the next size up. For example, if your waist measures 30-1/2 choose a size 32. Inseam measurement is to two inches below the knee for knickers, but full length for long pants.

Men's Knickers	Inches	Inches	Inches	Inches	Inches	Inches
Waist measurement	28-30	30-32	32-34	34-36	36-38	38-40
Inseam	17.5	18	18.5	19	19.5	19.5
Recommended Size	30	32	34	36	38	40

Women's Knickers	Inches	Inches	Inches	Inches	Inches	Inches
Waist measurement	22-24	24-26	26-28	28-30	30-32	32-34
Inseam	16	17	17.5	17.5	18	18.5
Recommended Size	24	26	28	30	32	34

UNITARDS

Measurement will be the same as the jacket instructions plus the knicker instructions.

PLASTRONS and UNDERARM PROTECTORS

When measuring for your plastron/underarm protector, make certain to get an accurate measurement of your chest. MEN- measure as high on the chest as possible with your arms down. WOMEN- measure your chest at the largest place. Choose the size plastron/underarm protector that is your chest measurement. Since our sizes are in two inch increments and your chest may not be on our sizing guide, choose the next size up. For example, if your chest measures 38-1/2 choose a size 40.

Plastrons	Inches	Inches	Inches	Inches	Inches
Chest measurement	30-32	34-36	38-40	42-44	46-48
Recommended Size	X-Small	Small	Medium	Large	X-Large

GLOVES

When measuring the hand we will need the circumference of the four knuckles where the fingers connect to the palm. hold your hand out like you are going to shake hands with a politician, so your thumb is up and out of the way, it is not involved in the measurement. please be as accurate as possible, as a difference of a half inch can change your glove size.

Click on the glove sizing chart (to the right) to download a PDF to help you correctly choose the proper glove size.



Hand Circumference	Inches	Inches	Inches	Inches	Inches
Measurements	6.5 - 7	7.25 - 7.75	7.75 - 8.5	8.5 - 9	9 - 9.75
Recommended Size	X-Small	Small	Medium	Large	X-Large

Click on the photo (to the right) for a larger view of how to correctly measure your hand.



MASKS

When measuring the head we will need the circumference of the face area. Measure the face starting under the chin half way between the chin and throat. Continue up the side of the face just in front of the ear. Continue up and over the forehead (note to guys: this is just above where your hair line used to be) down the other side ending where you started under the chin. Remember that all heads are shaped differently and may measure one size when they are actually another. We find that children under 8 wear extra small masks, children from 8 to 10 wear small, teen through adult women almost always wear medium and adult men large unless they are over 6ft. 2in. in which case go extra large.

Face Circumference	Inches	Inches	Inches	Inches	Inches
Measurements	21	22	23	24	25+
Recommended Size	X-Small	Small	Medium	Large	X-Large

Custom Made Clothing

Are you tall and slim? Short and stout? Anything except that perfect size? The ladies that make our clothing can fit you regardless of your size or shape. Please call so that we can let you speak with the head seamstress Starla, so that she can be sure to get all of the info that we need to ensure a good fit. She can be reached most days at 336-835-7774 before 2:00 EST.

©2004 - 2016 Triplette Competition Arms. All rights reserved.